

pressure-gauge type TM01



description:

High quality pressure gauge made of stainless steel to control process temperatures. Available as analog 4 – 20mA output or Pt100 4-wire output. Convinces by high quality, reliability and precision. Optional with neck tube to protect electrical devices from high process temperatures.

product features:

- to measure temperatures of liquid and gaseous media
- high flexibility by various sensor tube diameters and lengths
- different versions with diverse process connections
- male thread or hygiene process connection
- M12 plug included

connection:

G 1/2" B

temperature:

-50°C up to +150°C

sensor length:

0 – 200,0 mm – depending on design

design:

thermometer in compact design

body material:

Cr-Ni-steel

sensor:

Pt100 class A – IEC 60751

process connection:

stainless steel 1.4571/316TI

supply voltage:

10–35V DC reverse voltage protected

precision:

0,1K oder 0,08%

long-term drift:

±0,1K or 0,5% FS / Jahr not cumulative

output:

analog 4 – 20mA

temperature:

process: -50°C – +150°C

environment: -40°C – +85°C

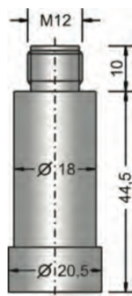
EMV compatibility:

Class B means of production / industrial sector (EN/IEC 61326)

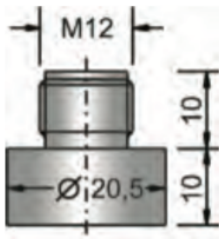
electrical connection:

plug M12 IP67

diameter:

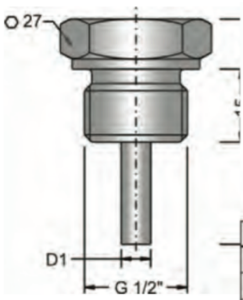


2-wire, 4...20mA

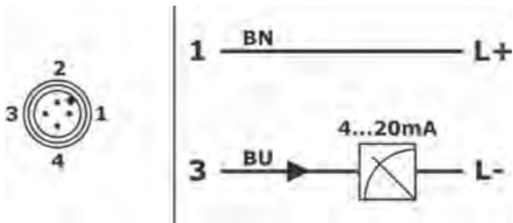


Pt100, 4-wire

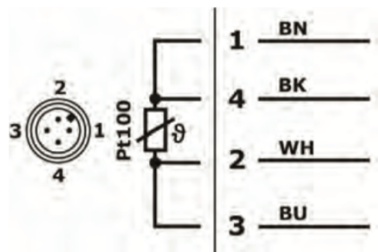
process connection:



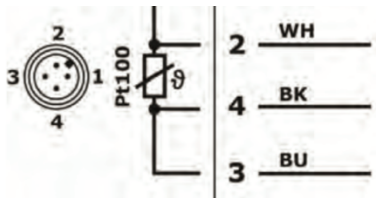
G 1/2" ISO 228-1



2-wire / 4...20 mA



4-wire / Pt100 / Type 1



4-wire / Pt100 / Type 2

explanation:

Core color standard connection cable M12:
 BN = brown, WH = white, BU = blue, BK = black
 The connection cable is not included.

article number:

| type | range of temperature | sensor length | electrical output | connection | sensor-diameter |
|-------------|---|------------------|------------------------------------|----------------------|------------------|
| TM01 | 00 – -50 – +100°C | 0 – 50 mm | 0 – 2-Leiter, 1x 4 – 20mA | 03 – G 1/2" B | .6 – 6 mm |
| | 01 – -40 – +60°C | 1 – 100 mm | 1 – Pt100, 4-Leiter, Typ 1* | | .8 – 8 mm |
| | 02 – -30 – +60°C | 2 – 150 mm | 2 – Pt100, 4-Leiter, Typ 2* | | .10 – 10 mm |
| | 03 – -30 – +150°C | 3 – 200 mm | | | |
| | 04 – -30 – +70°C | | | | |
| | 05 – -20 – +20°C | | | | |
| | 06 – -20 – +60°C | | | | |
| | 07 – -10 – +40°C | | | | |
| | 08 – 0 – +50°C | | | | |
| | 09 – 0 – +100°C | | | | |
| | 10 – 0 – +150°C (-50 - +150°C for Pt100)* | | | | |

* NOTE: Electrical output Pt100 always with temperature range -50 bis +150°C. In case of Pt100 output please order range of temperature 10.

example:

TM01100103

thermometer in compact design made of stainless steel **without neck tube**

output: Pt100, 4-wire, Type 1
 sensor length: 50 mm
 sensor diameter: 6 mm
 range of temperature: -50°C – +150°C
 connection: G 1/2" B

Note:

If process temperatures increase 100°C, a neck tube is recommended to protect the electrical devices. The neck tube is available with a standard length of 100 mm or individual lengths. Depending on the ordered length, an extra charge will be calculated. Please order as followed:

example:

TM01100103.6**HS** – for standard length of 100mm

TM01100103.6**Hxxx** – for individual lengths of xxx mm

Image similar, subject change without notice.