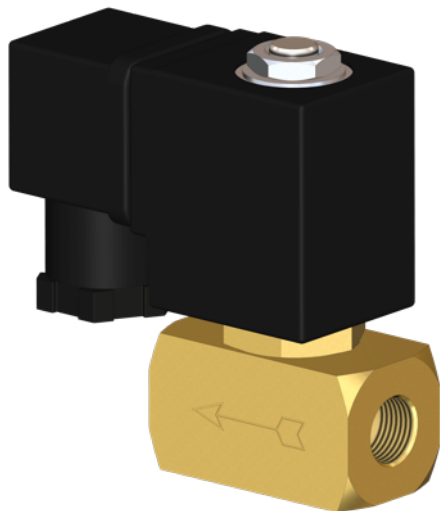


2/2-way solenoid valve brass type MV03



description:

2/2-way solenoid valve made of brass, very compact design for high flow rates. Ideal for machine and plant engineering. This valve switches at 0 bar. Direct acting valve.

features:

- Suitable for neutral and non-neutral **liquid and non-flammable, gaseous media**
- Mounting position: any, solenoid preferably above

connection:

1/4" inch

control:

direct acting

function:

NC – normally closed

pressure:

0 – 48 bar – depending on design

design:

seat valve

diameter:

DN 2,0 / DN 2,5 / DN 3,0 / DN 4,0 / DN 6,0

body material:

Brass

seal:

FKM, EPDM, NBR

voltage:

230V 50Hz 24V DC

voltage tolerance:

+/- 10% acc. VDE 0580

power consumption:

230V 50Hz: 15 VA
24V DC 18 Watt

duty:

100 % ED

plug socket:

IP65 is plug socket mounted acc. DIN EN 175301-803 Form A

plug:

cable diameter 8 mm, thread PG 9, design A

temperature:

ambient: Max. + 50°C
media: FKM -10°C up to 130°C
 EPDM -10°C up to 120°C
 NBR -10°C up to 90°C

DN

2,0 mm
2,5 mm
3,0 mm
4,0 mm
6,0 mm

max. pressure

0 – 48 bar (38 bar*)
0 – 30 bar (24 bar*)
0 – 20 bar (16 bar*)
0 – 10 bar (8 bar*)
0 – 6 bar (4,8 bar*)

Connection

G 1/4" inch
G 1/4" inch
G 1/4" inch
G 1/4" inch
G 1/4" inch

flow rate

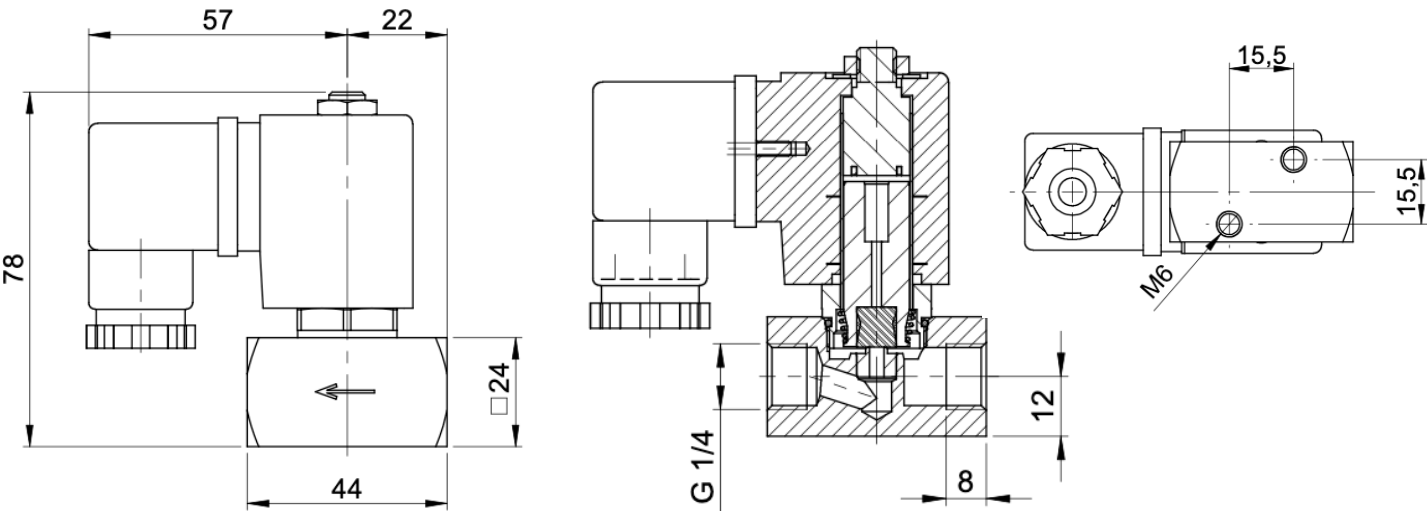
2,3 l/min
3,0 l/min
3,7 l/min
6,5 l/min
9,5 l/min

* using DC reduces the working pressure

options:

without oil and fat
plug socket mounted with LED

dimensions:



Test meeting the requirement of PED acc. to DIN EN 12266-1:

The tightness corresponds to the specified leakage rates*:

type	soft seat**
MV03	A

* acc. to EN 12266-1

** Soft Seat: EPDM, FKM, NBR

article number:

Type	Voltage	Seal	Function	Version	Size
MV03	1 – 230V 50Hz 2 – 24V DC	1 – EPDM 2 – FKM 4 – NBR	0 – NC normally closed	0 – standard	20 – DN 2,0 25 – DN 2,5 30 – DN 3,0 40 – DN 4,0 60 – DN 6,0

Example no. MV03120030:

MV03	1	2	0	0	30
------	---	---	---	---	----

2/2 way solenoid valve
Voltage: 230V 50Hz
Seal: FKM
Function: NC normally closed
Version: standard
Size: DN 3,0

Image similar, subject change without notice.