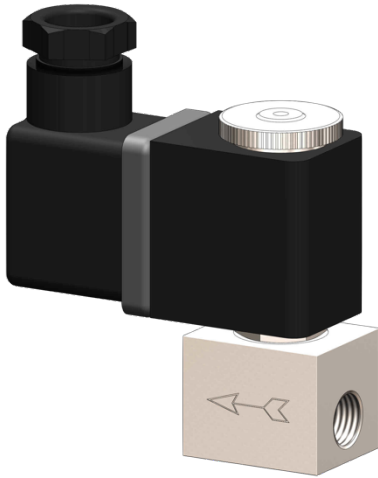


## 3/2-ways solenoid valve stainless steel type EV09



**description:**

3/2-way solenoid valve made of stainless steel, very compact design for high flow rates. Ideal for machine and plant engineering.

**product features:**

- Suitable for neutral and non-neutral **liquid and non-flammable, gaseous media**
- mounting position: any, preferably solenoid above

**connection:**  
1/8" Inch

**control:**  
direct acting

**function:**  
NC – normally closed

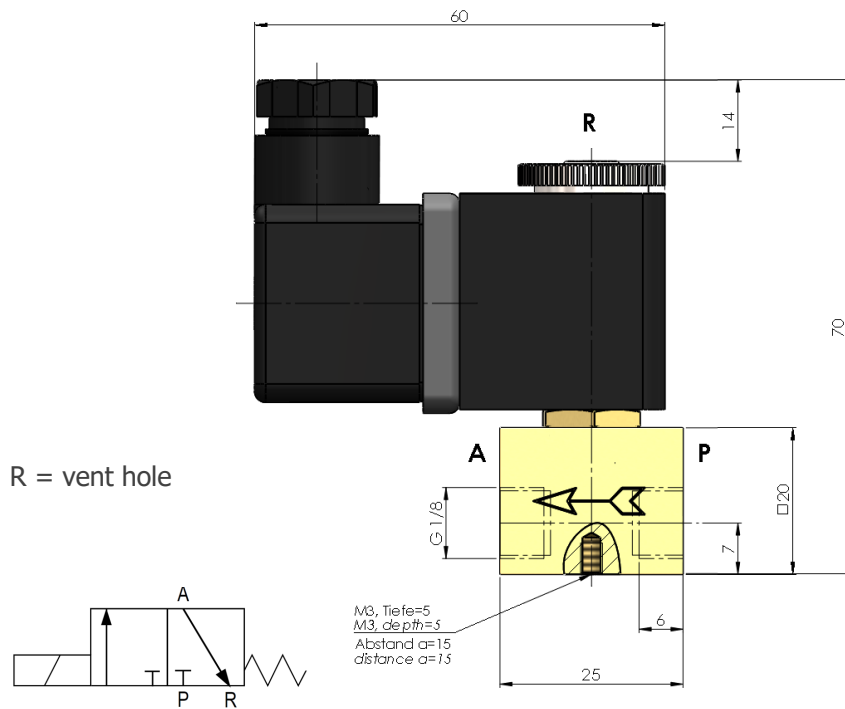
**pressure:**  
0 – 12 bar – depending on design

<b>design:</b>	seat valve
<b>diameter:</b>	DN 1,0 / DN 1,5 / DN 2,0
<b>body material:</b>	stainless steel 1.4305
<b>seal:</b>	FKM
<b>voltage:</b>	230V 50Hz            24V DC
<b>voltage tolerance:</b>	+/- 10% acc. to VDE 0580
<b>power consumption:</b>	230V 50Hz:            9,2 VA
	24V DC                    6 Watt
<b>duty:</b>	100 % ED
<b>plug socket:</b>	IP65 is plug socket mounted
<b>plug:</b>	Cable diameter 6-8 mm, thread PG 9, design B
<b>temperature:</b>	ambient:                Max. + 50°C
	media:                    FKM - 10°C up to 130°C

<b>DN</b>	<b>max. pressure</b>	<b>Connection</b>	<b>flow rate</b>
1,0 mm	0 – 12 bar	G 1/8" inch	0,5 l/min
1,5 mm	0 – 7 bar	G 1/8" inch	1,2 l/min
2,0 mm	0 – 4 bar	G 1/8" inch	2,1 l/min

**options:** without oil and fat  
plug socket mounted with LED

**dimensions:**



**Test meeting the requirement of PED acc. to DIN EN 12266-1:**

The tightness corresponds to the specified leakage rates\*:

type	soft seat**
EV09	A

\* acc. to EN 12266-1

\*\* Soft Seat: FKM

**article number:**

Type	Voltage	Seal	Function	Version	Size
<b>EV09</b>	<b>1 – 230V 50Hz</b> 2 – 24V DC	<b>2 – FKM</b>	<b>0 – NC normally closed</b>	<b>0 – standard</b>	10 – DN 1,0 <b>15 – DIN 1,5</b> 20 – DN 2,0

**Example no. EV09120015:**

<b>EV09</b>	<b>1</b>	<b>2</b>	<b>0</b>	<b>0</b>	<b>15</b>
-------------	----------	----------	----------	----------	-----------

3/2 way solenoid valve with 1/8" connection

Voltage: 230V 50Hz

Seal: FKM

Function: NC normally closed

Version: standard

Size: DN 1,5

Image similar, subject change without notice.