

## 2/2-way solenoid valve stainless steel type EV07

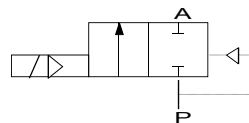


**description:**

2/2-way solenoid valve made of stainless steel with membrane for high flow rates. Ideal for machine and plant engineering. This valve switches at 0 bar (force pilot operated)

**features:**

- Suitable for neutral and non-neutral **liquid and non-flammable, gaseous media**
- Mounting position: any, preferably solenoid above



**connection:**

1/4", 3/8", 1/2" inch

**control:**

force pilot operated

**function:**

NC – normally closed

**pressure:**

0,0 – 20 bar – depending on design

**design:**

seat valve with membrane

**diameter:**

DN10

**body material:**

stainless steel 1.4308

**seal:**

EPDM, NBR, FKM

**voltage:**

230V 50Hz            24V DC

**voltage tolerance:**

+/- 10% acc. VDE 0580

**power consumption:**

230V 50Hz:            22 VA  
24V DC                13 Watt

**duty:**

100 % ED

**plug socket:**

IP65 is plug socket mounted acc. DIN EN 175301-803 form A

**plug:**

cable diameter 6-8 mm, thread PG 9, design A

**viscosity:**

≤20CST

**temperature:**

Ambient:                max. + 50°C  
media:                    FKM – 10°C up to +120°C  
                                  NBR – 10°C up to +90°C  
                                  EPDM – 10°C up to +130°C

**DN**

10 mm  
10 mm  
10 mm

**max. pressure**

0,0 – 20 bar (16 bar\*)  
0,0 – 20 bar (16 bar\*)  
0,0 – 20 bar (16 bar\*)

**Connection**

G 1/4" inch  
G 3/8" inch  
G 1/2" inch

**flow rate**

1,6 m<sup>3</sup>/h  
2,0 m<sup>3</sup>/h  
2,0 m<sup>3</sup>/h

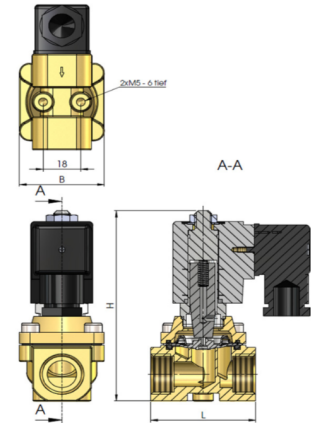
\* direct current reduces the working pressure

**options:** without oil and fat  
 plug socket mounted with LED  
 Ex II 2G Ex mII T4  
 II 3D IP65 T130°C



**dimensions:**

connection	DN	L	B	H
1/4" inch	10	50	40,5	98
3/8" inch	10	50	40,5	98
1/2" inch	10	50	40,5	98



**Test meeting the requirement of PED acc. to DIN EN 12266-1:**

The tightness corresponds to the specified leakage rates\*:

type	soft seat**
EV07	A

\* acc. to EN 12266-1

\*\* Soft Seat: EPDM, FKM, NBR

**article number:**

Type	Voltage	Seal	Function	Version	Size
<b>EV07</b>	<b>1 – 230V 50Hz</b> 2 – 24V DC	1 – EPDM <b>2 – FKM</b> 4 – NBR	<b>0 – NC normally closed</b>	<b>0 – standard</b>	01 – 1/4" <b>02 – 3/8"</b> 03 – 1/2"

**example No. EV07120002:**

**EV07** | **1** | **2** | **0** | **0** | **02**

2/2 way solenoid valve stainless steel  
 Voltage: 230V 50Hz  
 Seal: FKM  
 Function: NC normally closed  
 Version: standard  
 Size: 3/8"

Image similar, subject change without notice.