

## Loose flange TYPE FL03 acc. to EN 1092-1 type 02



### description:

Loose flanges acc. to EN 1092-1 type 02 to be fixed on pipes and fittings. This allows a free alignment of the flanges.

These flanges are useful to connect pipes or to integrate valves into a pipeline system.

### product features:

- suitable for **liquid and gaseous media**
- DIN EN 1092-1 type 02

### diameter:

DN10 – DN400

### connection:

PN10, PN16, PN25, PN40

### design:

loose flange

### material:

type 00: stainless steel 1.4541

type 01: stainless steel 1.4571 (on request)

type 02: steel C22.8 / P250GH bare

### standard:

EN 1092-1 type 02

### sealing surface:

A

### connection:

PN10/16/25/40

### mounting position:

free

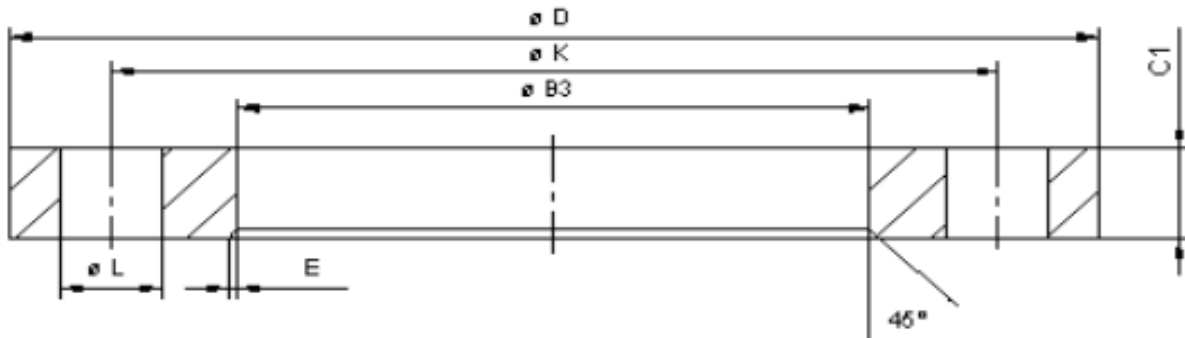
### seals:

optional

### screws:

optional

dimensions:



DN	PN	D	B3	C1	K	E	number	thread	L	weight kg
10	PN10 / 16 / 25 / 40	90	21	14	60	3	4	M12	14	0,591
15	PN10 / 16 / 25 / 40	95	25	14	65	3	4	M12	14	0,654
20	PN10 / 16 / 25 / 40	105	31	16	75	4	4	M12	14	0,909
25	PN10 / 16 / 25 / 40	115	38	16	85	4	4	M12	14	1,080
32	PN10 / 16 / 25 / 40	140	47	18	100	5	4	M16	18	1,770
40	PN10 / 16 / 25 / 40	150	53	18	110	5	4	M16	18	2,020
50	PN10 / 16	165	65	20	125	5	4	M16	18	2,520
	PN25 / 40	165	65	20	125	5	4	M16	18	2,650
65	PN10 / 16	185	81	20	145	6	4	M16	18	3,050
	PN25 / 40	185	81	22	145	6	4	M16	18	3,360
80	PN10 / 16	200	94	20	160	6	8	M16	18	3,480
	PN25 / 40	200	94	24	160	6	8	M16	18	4,180
100	PN10 / 16	220	120	22	180	6	8	M16	18	4,200
	PN25 / 40	235	120	26	190	6	8	M20	22	5,870
125	PN10 / 16	250	145	22	210	6	8	M16	18	5,210
	PN25 / 40	270	145	28	220	6	8	M24	26	7,950
150	PN10 / 16	285	174	24	240	6	8	M20	22	6,890
	PN25 / 40	300	174	30	250	6	8	M24	26	9,970
200	PN10	340	226	24	295	6	8	M20	22	8,870
	PN16	340	226	26	295	6	12	M20	22	9,310
	PN25	360	226	32	310	6	12	M24	26	13,80
	PN40	375	226	36	320	6	12	M27	30	17,40
250	PN10	395	281	26	350	8	12	M20	22	11,20
	PN16	405	281	29	355	8	12	M24	26	13,50
	PN25	425	281	35	370	8	12	M27	30	19,40
	PN40	450	281	42	385	8	12	M30	33	28,40
300	PN10	445	333	26	400	8	12	M20	22	12,80
	PN16	460	333	32	410	8	12	M24	26	18,00
	PN25	485	333	38	430	8	16	M27	30	25,50
	PN40	515	333	52	450	8	16	M30	33	43,60
350	PN10	505	365	30	460	8	16	M20	22	20,80
	PN16	520	365	35	470	8	16	M24	26	27,00
	PN25	555	365	42	490	8	16	M30	33	40,50
	PN40	580	365	58	510	8	16	M33	36	64,90
400	PN10	565	416	32	515	8	16	M24	26	26,40
	PN16	580	416	38	525	8	16	M27	30	34,60
	PN25	620	416	48	550	8	16	M33	36	56,10
	PN40	660	416	65	585	8	16	M36	39	95,10

article number:

material:		VA 1.4541	C22.8 / P250GH bare
		type 00	type 02
DN	PN	Art. No.	Art. No.
10	PN10 / 16 / 25 / 40	on request	FL03020102
15	PN10 / 16 / 25 / 40	FL03000103	FL03020103
20	PN10 / 16 / 25 / 40	FL03000104	FL03020104
25	PN10 / 16 / 25 / 40	FL03000105	FL03020105
32	PN10 / 16 / 25 / 40	FL03000106	FL03020106
40	PN10 / 16 / 25 / 40	FL03000107	FL03020107
50	PN10 / 16	FL03000108	FL03020108
	PN25 / 40	on request	FL03020208
65	PN10 / 16	FL03000109	FL03020109
	PN25 / 40	on request	FL03020209
80	PN10 / 16	FL03000110	FL03020110
	PN25 / 40	on request	FL03020210
100	PN10 / 16	FL03000111	FL03020111
	PN25 / 40	on request	FL03020211
125	PN10 / 16	FL03000112	FL03020112
	PN25 / 40	on request	FL03020212
150	PN10 / 16	FL03000113	FL03020113
	PN25 / 40	on request	FL03020213
200	PN10	FL03000114	FL03020114
	PN16	on request	FL03020214
	PN25	on request	FL03020314
	PN40	on request	FL03020414
250	PN10	FL03000115	FL03020115
	PN16	on request	FL03020215
	PN25	on request	FL03020315
	PN40	on request	FL03020415
300	PN10	FL03000116	FL03020116
	PN16	on request	FL03020216
	PN25	on request	FL03020316
	PN40	on request	FL03020416
350	PN10	FL03000117	FL03020117
	PN16	on request	FL03020217
	PN25	on request	FL03020317
	PN40	on request	FL03020417
400	PN10	FL03000118	FL03020118
	PN16	on request	FL03020218
	PN25	on request	FL03020318
	PN40	on request	FL03020418

Image similar, subject change without notice.