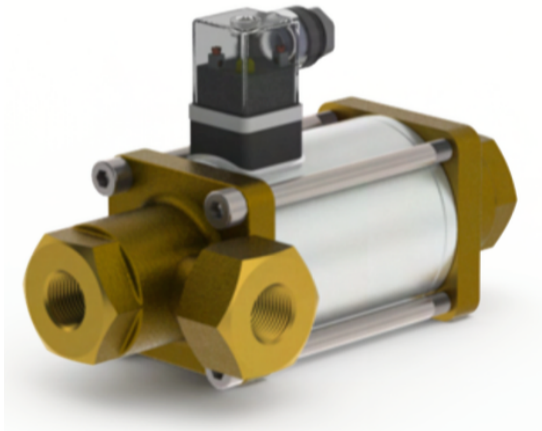


# Coaxial-valve type CV03



**Description:**

3/2 way coaxial-valve to control a medium in a pipeline system. These Coaxial-valves is direct acting and can use from 0.0 bar.

**Features:**

- suitable for neutral and not neutral **gaseous & liquid media**
- maintenance free
- backpressure leakproof
- short switching time
- bi-directional flow direction
- installation possible in any position

**Connection:**

3/8" DN10, 1/2" DN15, 3/4" DN20, 1" DN25

**Temperature / Media:**

-20°C to +100°C

**Pressure:**

0,0 bar to 40,0 bar

**Design:**

3/2 way, direct acting

**Material:**

Brass

**Connection:**

Thread

**Pressure:**

to 40,0 bar

**Function:**

NC - normally closed

NO - normally open

**Operation:**

Pressure balanced, with spring return

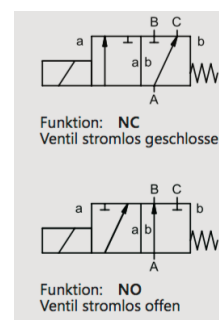
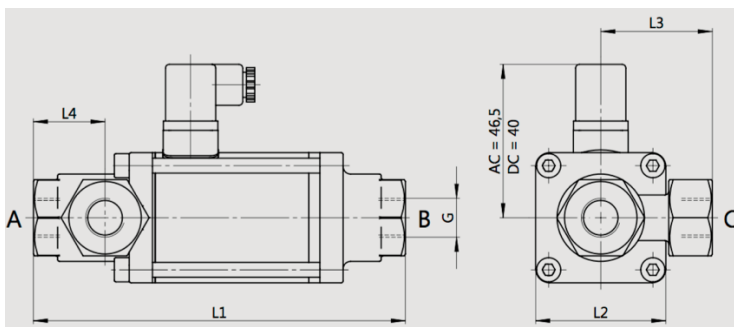
**Seal:**

FPM / PTFE / FPM

**connection / electro:**

PG 9, plug acc. to DIN EN 175301-803 form A LED

**Dimension:**



**Technical data**

	<b>DN10</b>	<b>DN15</b>	<b>DN20</b>	<b>DN25</b>
Length L1 / L2	166 mm / 50 mm	200 mm / 70 mm	229 mm / 80 mm	249 mm / 90 mm
Weight	2,0 kg	4,1 kg	6,0 kg	8,1 kg
Thread connection	G 3/8"	G 1/2"	G 3/4"	G 1"
Kv-value A -> B / A -> C	2,2 m3/h / 1,6 m3/h	5,2 m3/h / 3,6 m3/h	7,5 m3/h / 5,6 m3/h	12,2 m3/h / 10,2 m3/h
Temperature media	-20°C to +100°C	-20°C to +100°C	-20°C to +100°C	-20°C to +100°C
Temperature ambient	-20°C to +60°C	-20°C to +60°C	-20°C to +60°C	-20°C to +60°C
Switching time open/close	45 ms / 70 ms	60 ms / 130 ms	105 ms / 150 ms	150 ms / 190 ms
Vacuum leak rate	< 10 <sup>-4</sup> mbar•l•s <sup>-1</sup>	< 10 <sup>-4</sup> mbar•l•s <sup>-1</sup>	< 10 <sup>-4</sup> mbar•l•s <sup>-1</sup>	< 10 <sup>-4</sup> mbar•l•s <sup>-1</sup>
Flow direction	A -> B / A -> C B -> A Δp 12 bar max.	A -> B / A -> C B -> A Δp 12 bar max.	A -> B / A -> C B -> A Δp 12 bar max.	A -> B / A -> C B -> A Δp 12 bar max.
Nominal voltage / current consumption	DC 24 V / 1,45A AC 230 V / 0,18 A	DC 24 V / 2,1A AC 230 V / 0,24 A	DC 24 V / 2,2A AC 230 V / 0,26 A	DC 24 V / 2,5A AC 230 V / 0,30 A
Insulating rating	H	H	H	H
Protection	IP 65	IP 65	IP 65	IP 65
Energized duty rating	ED 100%	ED 100%	ED 100%	ED 100%

**Article number:**

Type	Voltage	Function	Size
CV03 – brass	00 – 230V AC 01 – 24V DC	00 – NC normally closed 01 – NO normally open	02 – G 3/8" 03 – G 1/2" 04 – G 3/4" 05 – G 1"

**Example No. CV03010003:**

**CV03** | **01** | **00** | **03**

3/2 way coaxial-valve made of brass  
 Voltage: 24V DC  
 Function: normally closed  
 Size: G 1/2"

Image similar, subject change without notice.