

## Wedge Gate Valve (flat form), gray cast iron, TYPE AS06



### Description:

Flat gate valves are used for the controlled opening and closing of a piping system. Flow rates can also be regulated using the optional regulating cone.

### Product features:

- Suitable for neutral **liquid media (fluid group 2)**
- With external or internal spindle
- Housing material: gray cast iron EN-GJL-250

### Connection:

DN40, DN50, DN65, DN80, DN100, DN125, DN150, DN200, DN250, DN300

### Temperature:

-10°C to 150°C

### Pressure:

up to 10.0 bar

### Design:

Wedge Gate Valve (flat form)

### Housing material:

Gray cast iron 0.6025 / EN-GJL-250

### Spindle material:

Stainless steel 1.4021 / AISI 420

### Spindle:

**External & rising or internal & non-rising**

### Nominal pressure

PN10

### Wedge material:

DN40 – DN100: Carbon steel + stainless steel 1.4307 / 304L

DN125 – DN300: Gray cast iron 0.6025 / EN-GJL-250

### Handwheel material:

Cast iron 0.6025 / EN-GJL-250

### Handwheel:

Non-rising

### Seal:

Fasit 205 (asbestos-free)

### Installation:

In horizontal pipes, spindle pointing vertically upwards

### Remarks:

Phenolic oil resin coated with zinc phosphate and exterior paint gray RAL7011

Fitting in accordance with PED 2014/68/EU

Final inspection in accordance with DIN EN 12266, leakage rate A

Strength-water PN\*1.5; tightness in seat-water PN\*1.1

### Overall length:

According to DIN EN 558-1 basic series 14

### Flange dimensions:

According to DIN EN 1092-2

### Sealing strip:

According to DIN EN 1092-2 Type B

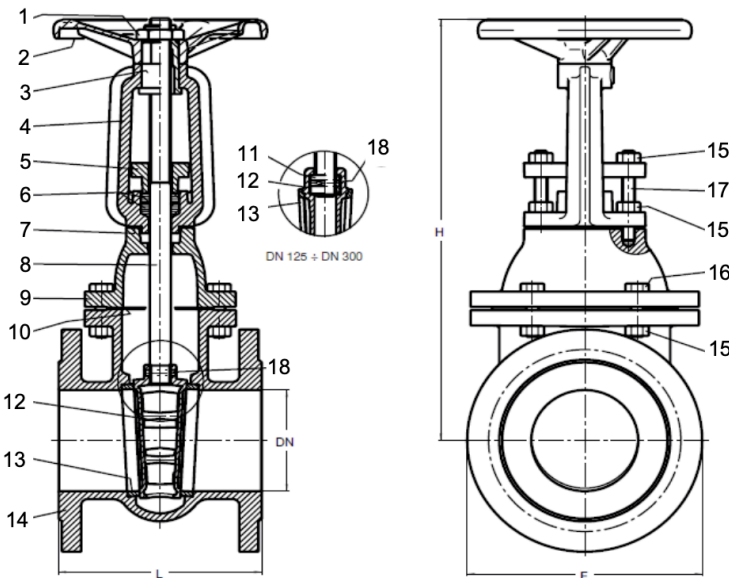
**Pressure-temperature correlation:**

Intermediate values of the maximum permissible operating pressures may be calculated by linear interpolation between the nearest lower and higher temperature values.

According to DIN EN 1092-2	-10°C	20	120°C	150°C
Gray cast iron 0.6025	10 bar	10 bar	10 bar	8 bar

**Materials:**

**Version with external spindle:**



Item	Designation	Material
1	Lock nut	Brass CW614N
2	Handwheel	Gray cast iron 0.6025 / EN-GJL-
3	Screw nut	Cast brass CB 754-S GM
4	Bracket	Gray cast iron 0.6025 / EN-GJL-
5	Gland	Cast iron 0.6025 / EN-GJL-250
6	Packing	PTFE
7	Gasket	Fasit 205 asbestos-free
8	Spindle	Stainless steel AISI 410
9	Housing cover	Gray cast iron 0.6025 / EN-GJL-
10	Seal	Fasit 205 asbestos-free
11	Screw nut	Carbon steel A105
12	Wedge (DN40 – DN100)	Carbon steel A105 + Stainless steel 1.4307 / AISI
12	Wedge (DN125 –	Gray cast iron 0.6025 / EN-GJL-
13	Seat	Stainless steel 1.4307 / AISI
14	Housing	Gray cast iron 0.6025 / EN-GJL-
15	Screw	Galvanized 8.8 carbon steel
16	Screw	Galvanized 8.8 carbon steel
17	Long thread	Galvanized 8.8 carbon steel
18	Pin	Stainless steel 1.4401 / AISI 316

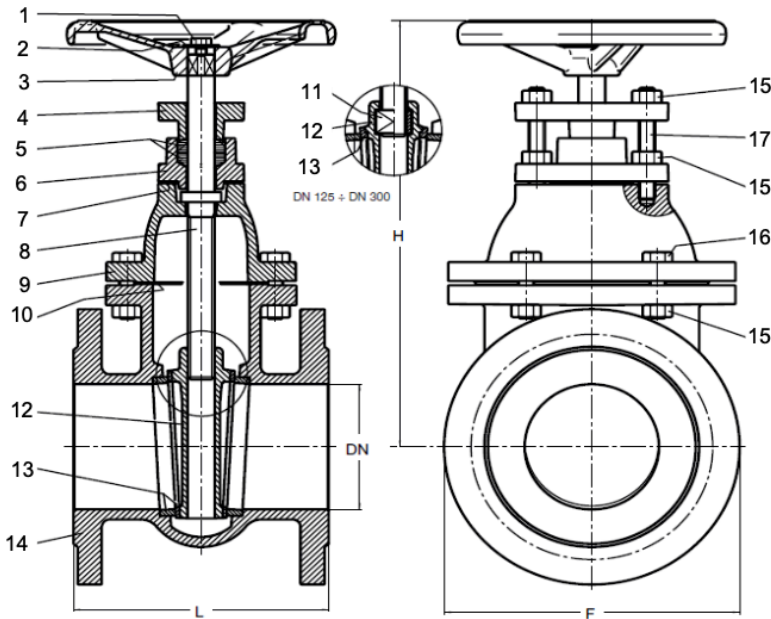
**Dimensions:**

**Version with external spindle:**

	DN	40	50	65	80	100	125	150	200	250	300
PN10	PN	10	10	10	10	10	10	10	10	10	10
	F	150	165	185	200	220	250	285	340	395	445
	L	140	150	170	180	190	200	210	230	250	270
	H	265	275	335	355	400	495	585	700	830	960
	∅ Handwheel	150	150	175	175	200	200	225	225	250	300
	Rotations (open/close)	10	12.5	16	20	25	25	30	40	50	60
	Nm	30	30	35	35	40	45	45	60	65	70
	Kvs value	107	250	430	790	1250	1960	2790	2880	4306	6380
	Weight kg	10	12	16	20	28	33	43	72	100	134

**Materials:**

**Version with internal spindle:**



Item	Designation	Material
1	Screw	Galvanized 8.8 carbon steel
2	Washer	Galvanized carbon steel
3	Handwheel	Gray cast iron 0.6025 / EN-GJL-
4	Gland	Gray cast iron 0.6025 / EN-GJL-
5	Pack	PTFE
6	Gland	Gray cast iron 0.6025 / EN-GJL-
7	Seal	Fasit 205 asbestos-free
8	Spindle	Stainless steel AISI 410
9	Housing cover	Gray cast iron 0.6025 / EN-GJL-
10	Seal	Fasit 205 asbestos-free
11	Screw nut	Carbon steel A105
12	Wedge (DN40 – DN100)	Carbon steel A105 + Stainless steel 1.4307 / AISI
12	Wedge (DN125 – DN300)	Grey cast iron 0.6025 / EN-GJL-
13	Seat	Stainless steel 1.4307 / AISI
14	Housing	Gray cast iron 0.6025 / EN-GJL-
15	Screw	Galvanized 8.8 carbon steel
16	Screw	Galvanized 8.8 carbon steel
17	Long thread	Galvanized 8.8 carbon steel

**Dimensions:**

**Version with internal spindle:**

	DN	40	50	65	80	100	125	150	200	250	300
<b>PN10</b>	PN	10	10	10	10	10	10	10	10	10	10
	F	150	165	185	200	220	250	285	340	395	445
	L	140	150	170	180	190	200	210	230	250	270
	H	230	245	290	315	355	415	460	545	635	725
	∅ Handwheel	125	150	175	175	200	200	225	225	250	300
	Rotations (open/close)	10	12.5	16	20	25	25	30	40	50	60
	Nm	30	30	35	35	40	45	45	60	65	70
	Kvs value	107	250	430	790	1250	1960	2790	2880	4306	6380
	Weight kg	9	11	15	18	22	31	40	60	85	135

**Options (on request):**

- Epoxy coating
- Version with nominal pressure PN16

Item number:

Design	Pressure rating	Material	Connection	Spindle	Size
<b>AS06 – Flat gate valve</b>	<b>0 – PN10</b>	<b>0 – Gray cast iron 0.6025</b>	<b>0 – Flange</b>	<b>0 – External</b> 1 – internal	07 – DN40 08 – DN50 09 – DN65 10 – DN80 11 – DN100 <b>12 – DN125</b> 13 – DN150 14 – DN200 15 – DN250 16 – DN300

Example No. AS06000012

<b>AS06</b>	<b>0</b>	<b>0</b>	<b>0</b>	<b>0</b>	<b>12</b>
-------------	----------	----------	----------	----------	-----------

Flat slide valve made of gray cast iron  
 Pressure rating: PN10  
 Material: Gray cast iron 0.6025  
 Connection: Flange  
 Spindle: external  
 Size: DN125

Illustration similar, subject to technical and dimensional changes.