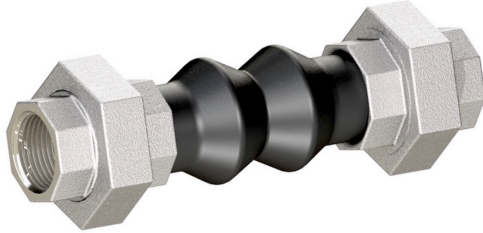


Compensators TYPE KP02



description:

Compensators are used, when vibrations have to be absorbed in a system.

features:

- Suitable for liquid media and non-hazardous gases
- Compensation for pipe expansion
- Compensation for misalignment

connection:

1/2" – 2"

construction:

straightway form

pressure:

0 – 16 bar – depending on design

design:

Expansion joint

connection:

Female thread BSP ISO 7/1

material screw connections:

steel (electro galvanized)

sleeve:

design 00 EPDM -10°C - +100°C

pressure:

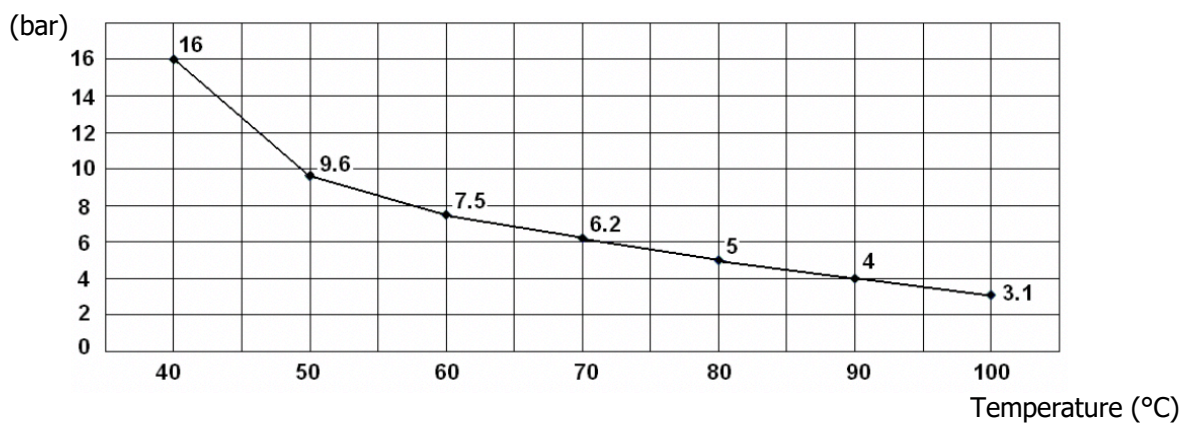
max. 16,0 bar depending on temperature

standards:

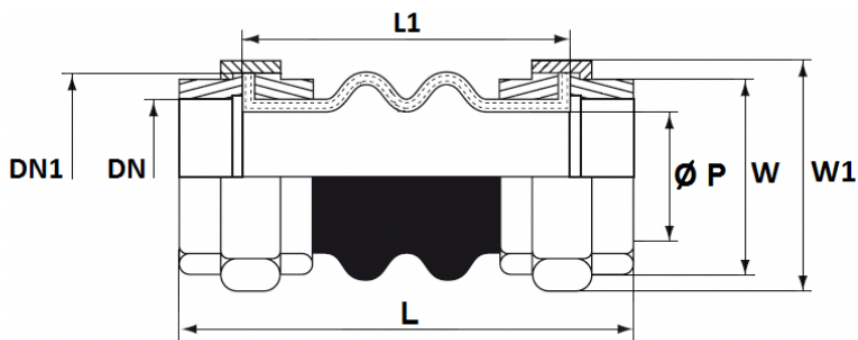
- acc. ISO 9001:2015
- 2014/68/EU

Pressure / Temperature graph:

EPDM



dimensions

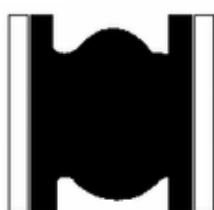


DN	1/2"	3/4"	1"	1 1/4"	1 1/2"	2"
DN1	M42	M42	M52	M60	M68	M82
L mm	200	200	200	200	200	200
L1 mm	151	151	150	143	137	130
Ø P	14	16	21	25	32	42
W	27	33	41	50	55	69
W 1	49	49	60	70	79	95
weight kg	0,6	0,55	0,85	1,25	1,6	2,4

Movements



Compansion



Expansion



Lateral



Angular

DN	1/2"	3/4"	1"	1 1/4"	1 1/2"	2"
Compansion mm	22	22	22	22	22	22
Expansion mm	6	6	6	6	6	6
Lateral mm	22	22	22	22	22	22
Angular	30°	30°	30°	30°	30°	30°

article number:

Type	Connection	Sleeve	Size
KP02	00 – female thread	00 – EPDM	03 – 1/2"
			04 – 3/4"
			05 – 1"
			06 – 1 1/4"
			07 – 1 1/2"
			08 – 2"

Example Nr. KP02000005:

KP02	00	00	05
------	----	----	----

Compensators made of steel (electro galvanized)

Connection: female thread ISO 7/1

Sleeve: EPDM

Size: 1"

Illustration similar, technical and dimensional changes reserved.