

# Ball valve stainless steel type FK11



**Description:**

Ball valve in stainless steel with stainless steel handle and ball in compact design. Flanges with metric drilling holes. To shut off pipeline systems.

**Features:**

- suitable for neutral and not neutral **gaseous & liquid media**
- Threaded holes flanges
- ISO 5211 mounting pad for actuator
- Locking device from DN 25 – DN 100
- Antistatic device up to DN100
- Exhaust hole in the blaa up to DN100
- Anti blow-out stem

**Connection:**  
DN15 – DN150

**Construction:**  
Full port design

**Pressure:**  
max. 16 bar

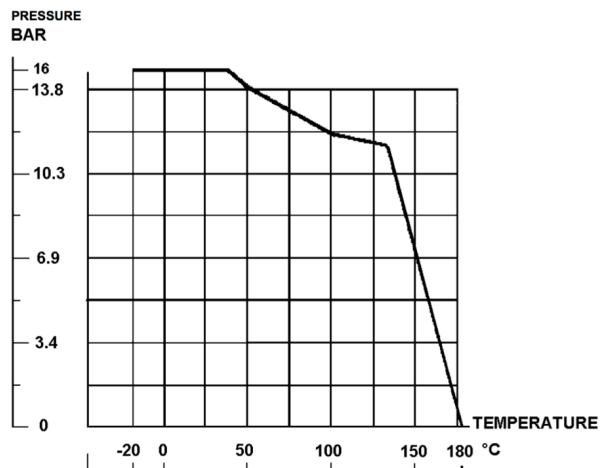
**Design:**  
**Body and ball material:**  
**Seat:**  
**Body seal:**  
**Stem seal:**  
**Handle:**  
**Mounting pad:**  
**Flange connection:**

compact metric drilling holes, full bore up to DN100  
 Stainless steel 1.4408 / ASTM A351 CF8M  
 TFM1600 / starting DN125: PTFE filled with 15% glass fiber  
 PTFE  
 FKM / starting DN125: PTFE  
 Stainless steel with plastic cover / starting DN125: steel  
 ISO 5211  
 DIN EN 1092-1 PN16

**Temperature:**

-20°C to +180°C – depending on pressure

**Pressure-temperature diagram:**



**Kvs values:**

dimension DN	15	20	25	32	40	50	65	80	100	125	150
<b>Kvs (m<sup>3</sup>/h)</b>	21	48	84	162	201	314	530	804	1256	2510	3401

**Torque values:**

dimension DN	torque in Nm
15	6
20	15
25	15
32	20
40	30
50	50
65	71-85
80	90-105
100	110-120
125	190
150	250

**Tightening torque for screws:**

dimension DN	threading	torque in Nm
15	M12	30-40
20		
25		
32	M16	40-50
40		
50		50-60
65		
80		
100		

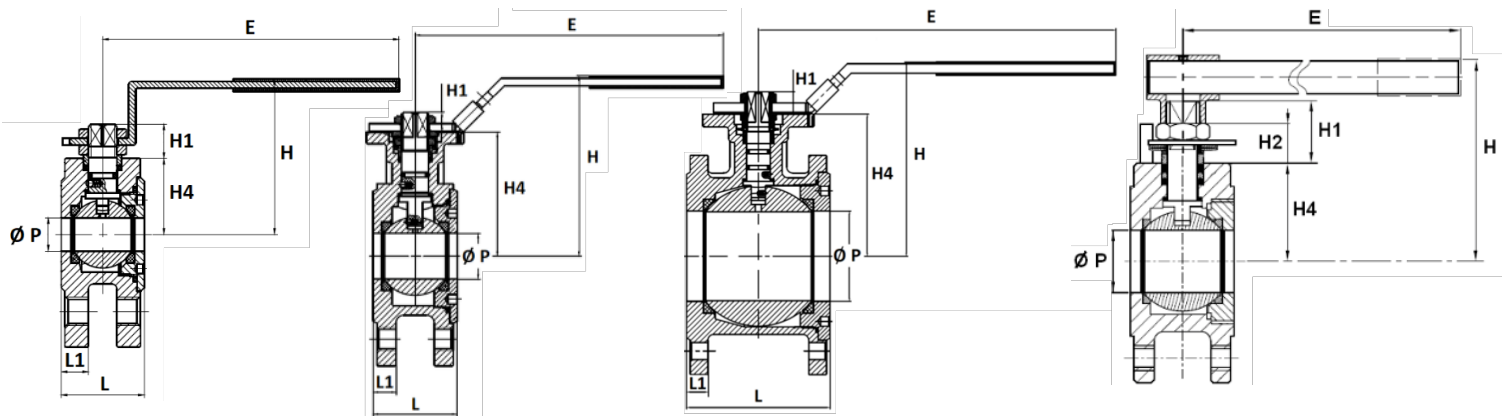
## Dimensions:

DN15-20

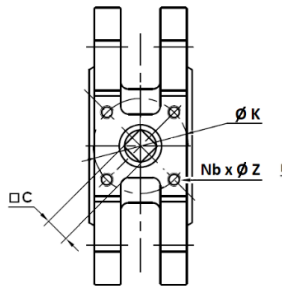
DN25-50

DN65-100

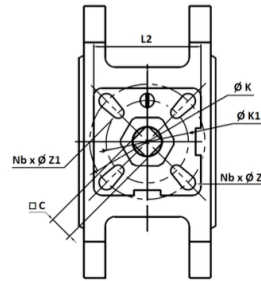
DN125-150



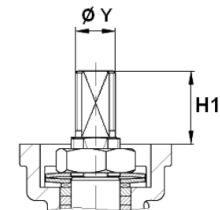
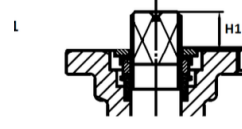
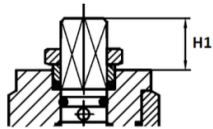
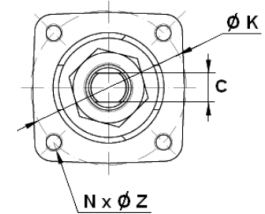
DN 15- 20



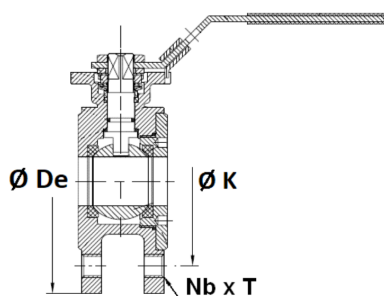
DN25- 100



DN 125 - 150



DN	ØP	L	L1	E	H	H1	H2	H4	C	L2	ØY	ØK	ISO	Nb x ØZ	ØK1	ISO 1	Nb x ØZ	weight (kg)
15	14	35	11,5	125	65,7	14,5	-	32	9	-	-	36	F03	4 x M5	-	-	-	1,09
20	19	39	12	125	69	13,5	-	35.5	9	-	-	36	F03	4 x M5	-	-	-	1,45
25	24	44	12	186,5	94,5	10,5	-	65	11	49	-	42	F04	4 x 6,4	50	F05	4 x 7	1,99
32	30	52	14	186,5	101	9	-	71.5	11	49	-	42	F04	4 x 6,4	50	F05	4 x 7	3,08
40	38	64	16	276,5	123,5	13,5	-	85	14	65	-	50	F05	4 x 7	70	F07	4 x 9	4,73
50	48	83	16	276,5	122	14	-	83.5	14	65	-	50	F05	4 x 7	70	F07	4 x 9	6,24
65	64	105	16	381,5	148	19	-	104	17	94	-	70	F07	4 x 9	102	F10	4 x 11	10,37
80	76	121	18	381,5	164	19	-	120	17	94	-	70	F07	4 x 9	102	F10	4 x 11	13,89
100	94	152	18	441,5	173,5	20	-	130	17	94	-	70	F07	4 x 9	102	F10	4 x 11	20,3
125	118	179	-	400	205	50	31	117	17	-	28	10	F10	4 x M10	-	-	-	30,00
150	135	202	-	600	220	50	31	130	17	-	28	12	F12	4 x M12	-	-	-	41,00



DN	ØDe	ØK	Nb x T
15	95	65	4 x M12
20	105	75	4 x M12
25	115	85	4 x M12
32	140	100	4 x M16
40	150	110	4 x M16
50	165	125	4 x M16
65	185	145	4 x M16
80	200	160	8 x M16

DN	ØDe	ØK	Nb x T
100	220	180	8 x M16
125	250	210	8 x M16
150	285	240	8 x M20

## Options (on request):

- Up to DN100: ATEX Group 2 Category 2G/2D Zone 1 & 21 and 2 & 22

## Article number:

design	material	seal	thread
<b>FK11</b>	<b>00 – stainless steel</b>	<b>00 – PTFE</b>	03 – DN15 <b>04 – DN20</b> 05 – DN25 06 – DN32 07 – DN40 08 – DN50 09 – DN65 10 – DN80 11 – DN100 12 – DN125 13 – DN150

### example No. FK11000004:

**FK11** | **00** | **00** | **04**

Ball valve made of stainless steel with PTFE seal and DN20.

Image similar, subject change without notice.