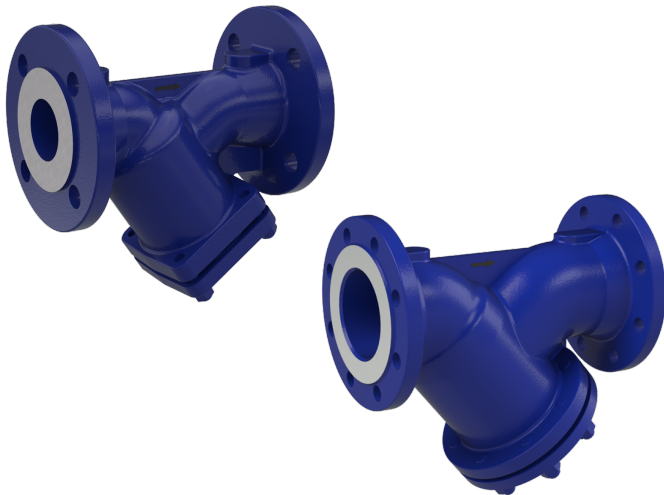


Flange-strainer for steam TYPE SZ07



Description:

This strainer can be used for temperatures up to **+300°C** – with that also for **steam** - based on used material and graphite-gasket

Product features:

- **Suitable for high temperatures (steam)**
- Filtering of media
- Length EN 558 Series 1
- Bolted bonnet with draining cap
- Removable stainless steel filter

Connection:
DN15 – DN200

Construction:
Y-design

Temperature:
-10°C to +300°C

Pressure:
0 – 16 bar
consider pressure-temperature-diagram

Design:

Connection

Body (1):

Bonnet (2):

Filter (3):

Studs + nut (4 + 5):

Draining cap (6):

Bonnet gasket (7):

Gasket (8):

Temperature:

Pressure:

Mesh:

Y-strainer

Flange R.F. PN16 acc. to EN 1092-2

Cast iron EN GJL-250 (GG25) with blue RAL 5002 painting (100 μ)

Cast iron EN GJL-250 (GG25)

Stainless steel 1.4301 / AISI 304

Steel 8.8-A2A / 8-A2A

Steel CE35E

Stainless steel 1.4571

Graphite

-10°C to +300°C

Max. 16 bar / **steam: max. 10 bar**

Up to DN50: 1 mm / DN65-DN80: 1,25 mm / from DN100: 1,6 mm

CE / conformity:

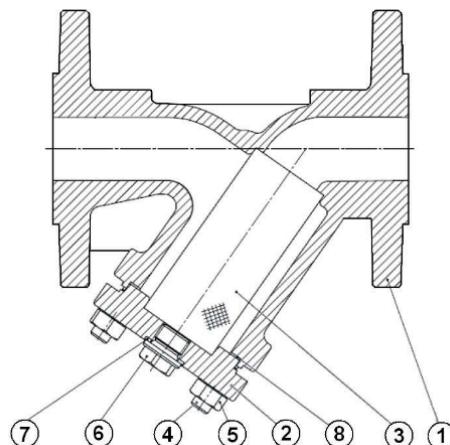
Directive 2014/68/EU: For liquids and gases of Group 1

DN15 – DN25: no CE marking

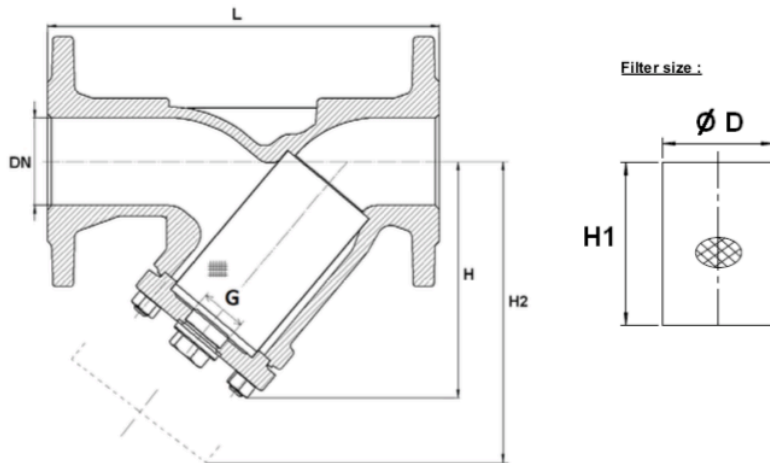
DN32 – DN50: CE marking, Risk Category I

DN65 – DN200: marking CE0062 or CE0343, Risk Category II

Material (see above):

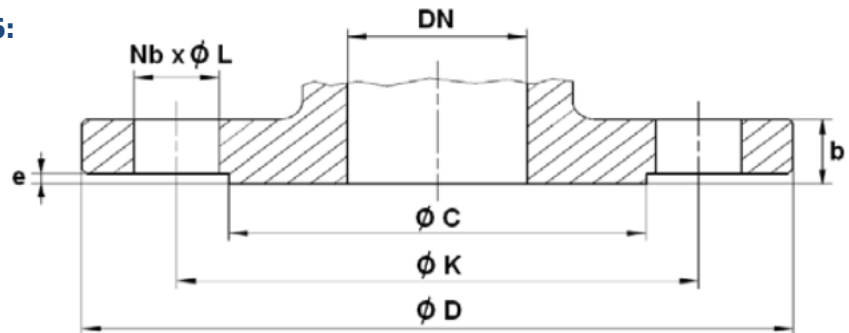


Dimensions:



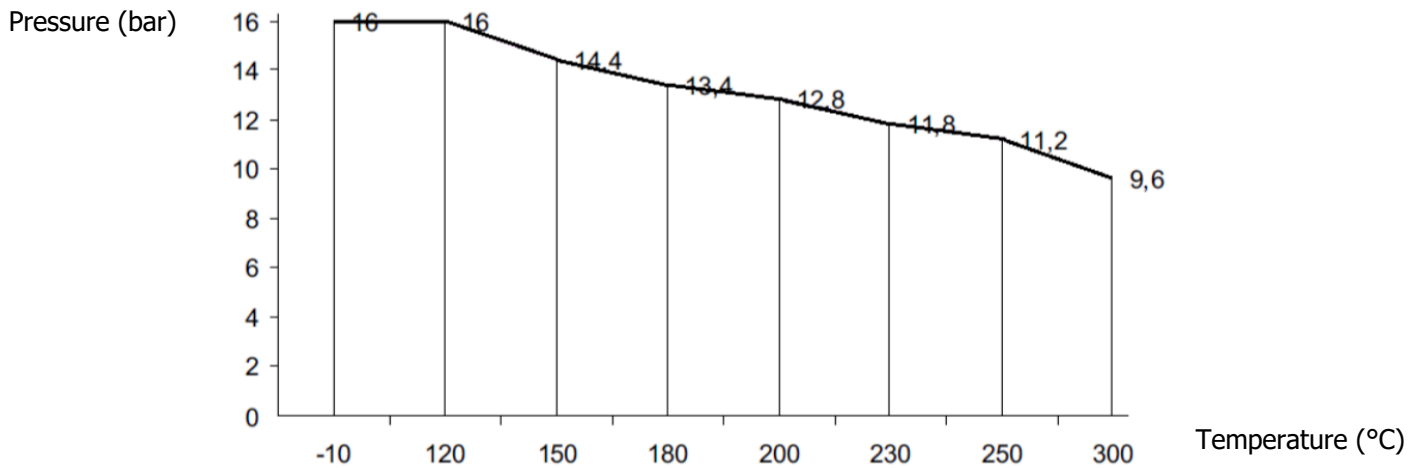
DN	L	H	H2	G	Ø D	H1	Mesh	Kvs	Weight
	mm	mm	mm	Zoll	mm	mm	mm	m ³ /h	kg
15	130	90	135	3/8"	23	56	1	6,3	2,6
20	150	100	150	3/8"	28	68	1	11,2	3,0
25	160	115	180	3/4"	36	82	1	14,7	4,3
32	180	135	215	3/4"	42	98	1	23,7	6,8
40	200	150	240	1"	50	114	1	37,7	8,8
50	230	155	250	1"	61,5	119	1	57,9	11,0
65	290	175	285	1"	78,5	134	1,25	101,5	14,6
80	310	205	330	1"	89,5	149	1,25	147,4	18,6
100	350	275	365	1 1/2"	109,5	169	1,6	209,6	27,0
125	400	325	425	1 1/2"	137,5	199	1,6	326,2	38,5
150	480	397	480	1 1/2"	160	224	1,6	403	54,5
200	600	535	610	1 1/2"	210	284	1,6	707	110,0

Flange dimensions PN10/PN16:

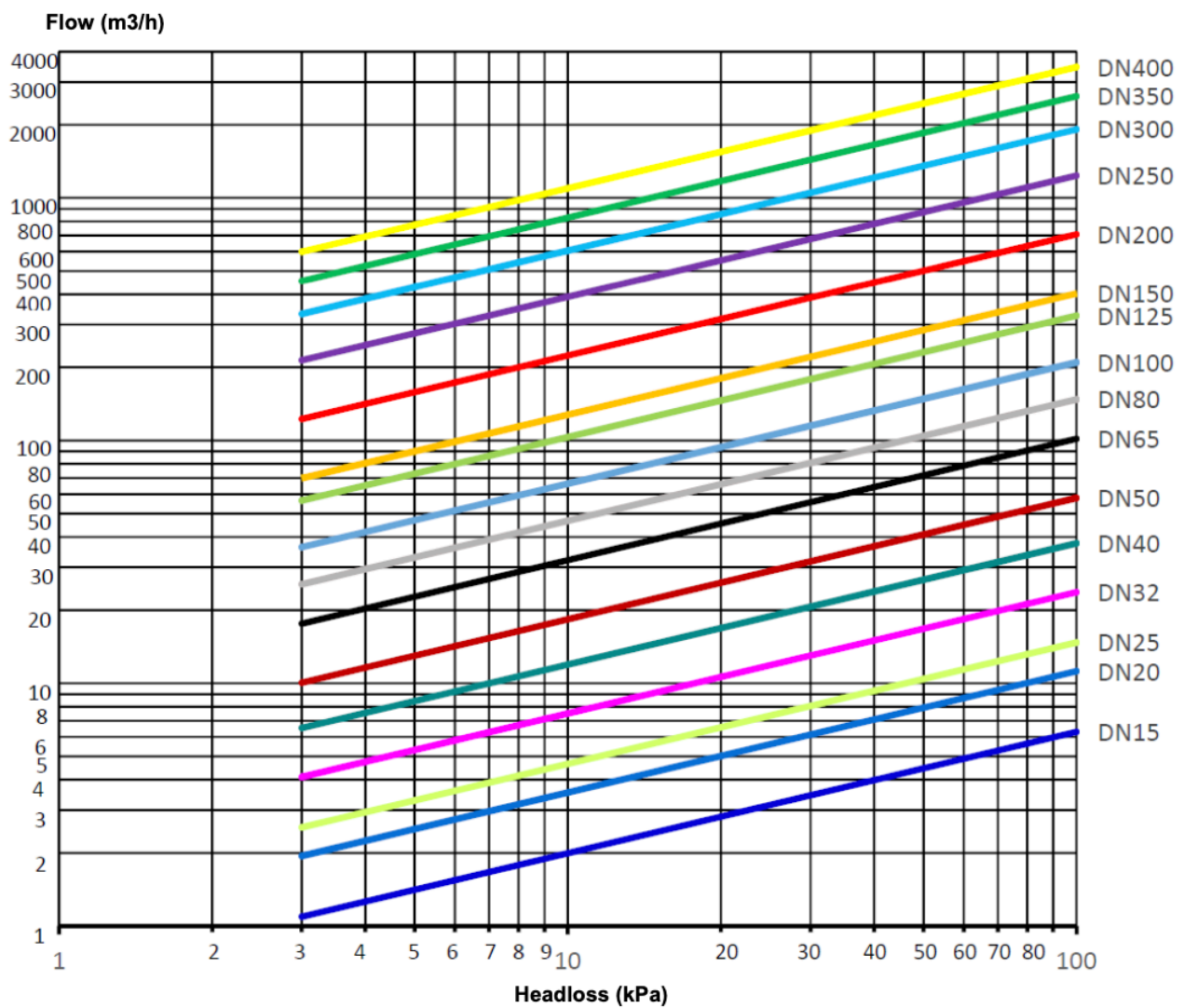


DN	PN	Ø C	Ø D	Ø K	Nb x Ø L	b	e
		mm	mm	mm		mm	mm
15	10/16	46	95	65	4 x 14	16	2
20	10/16	56	105	75	4 x 14	18	2
25	10/16	65	115	85	4 x 14	18	2
32	10/16	76	140	100	4 x 19	18	2
40	10/16	84	150	110	4 x 19	18	2
50	10/16	99	165	125	4 x 19	20	2
65	10/16	118	185	145	4 x 19	18	2
80	10/16	132	200	160	8 x 19	20	2
100	10/16	156	220	180	8 x 19	20	2
125	10/16	184	250	210	8 x 19	22	2
150	10/16	211	285	240	8 x 23	22	2
200	16	266	340	295	12 x 23	24	2

Pressure-temperature-diagram (steam excluded):

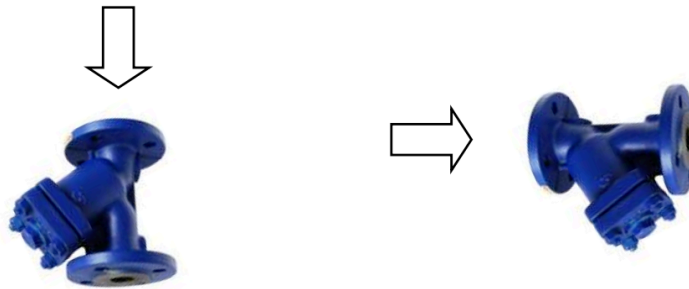


Pressure-loss-diagram:



Installation position:

- Consider the flow direction indicated by the arrow
- Horizontal or vertical position with descendant flow



Article number:

Type	Material	Flange	Size
SZ07	00 – cast iron	00 – PN10/16*	03 – DN15 04 – DN20 05 – DN25 06 – DN32 07 – DN40 08 – DN50 09 – DN65 10 – DN80 11 – DN100 12 – DN125 13 – DN150 14 – DN200

*PN10/16 from DN15 up to DN150, PN16 at DN200

Example no. SZ07000011:

SZ07 | **00** | **00** | **11**

flange-strainer made of cast iron

flange: PN10/16

size: DN100

Image similar, subject change without notice.