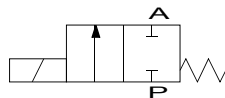
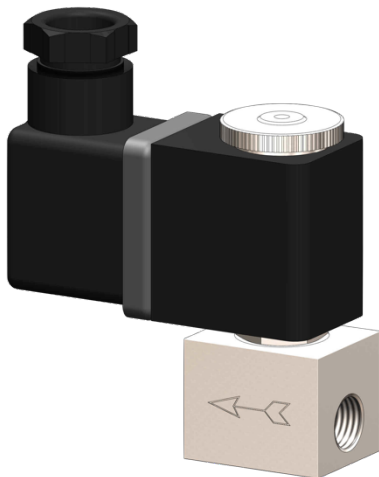


2/2-way solenoid valve stainless steel type EV01



description:

2/2-way solenoid valve made of stainless steel, very compact design for high flow rates. Ideal for machine and plant engineering. This valve switches at 0 bar (directly acting solenoid valve)

features:

- Suitable for neutral and non-neutral **liquid and non-flammable, gaseous media**
- Mounting position: any, preferably solenoid above

connection:

1/8" inch

control:

direct acting

function:

NC – normally closed

pressure:

0 – 16 bar – depending on design

design:

seat valve

diameter:

DN 1,0 / DN 1,5 / DN 2,0 / DN 2,5

body material:

Stainless steel 1.4305

seal:

FKM

voltage:

230V 50Hz 24V DC

voltage tolerance :

+/- 10% acc. VDE 0580

power consumption:

230V 50Hz: 9,2 VA

24V DC 6 Watt

duty:

100 % ED

plug socket:

IP65 with plug socket mounted

plug:

cable diameter 6-8 mm, thread PG 9, design B

temperature:

ambient: max. + 50°C

media: FKM – 10°C up to +130°C

DN

1,0 mm

1,5 mm

2,0 mm

2,5 mm

max. pressure

0 – 16 bar

0 – 13 bar

0 – 10 bar

0 – 8 bar

connection

G 1/8" inch

G 1/8" inch

G 1/8" inch

G 1/8" inch

flow rate

0,5 l/min

1,2 l/min

2,1 l/min

2,8 l/min

options:

without oil and fat

plug socket mounted with LED

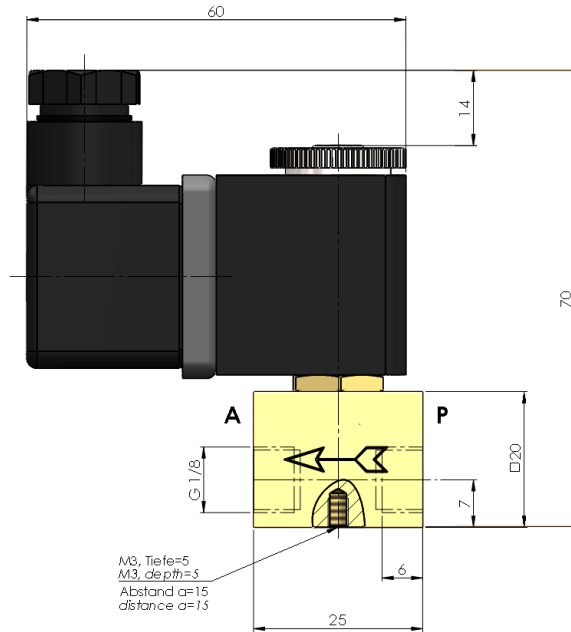
Ex

II 2G Ex mII T4

II 3D IP65 T130°C



dimensions:



Test meeting the requirement of PED acc. to DIN EN 12266-1:

The tightness corresponds to the specified leakage rates*:

type	soft seat**
EV01	A

* acc. to EN 12266-1

** Soft Seat: FKM

article number:

Type	Voltage	Seal	Function	Version	Size
EV01	1 – 230V 50Hz 2 – 24V DC	2 – FKM	0 – NC normally closed	0 – Standard	10 – DN 1,0 15 – DN 1,5 20 – DN 2,0 25 – DN 2,5

Example No. EV01120010:

EV01 | 1 | 2 | 0 | 0 | 10

2/2 way solenoid valve stainless steel
Voltage: 230V 50Hz
Seal: FKM
Function: NC normally closed
Version: standard
Size: DN 1,0

Image similar, subject change without notice.