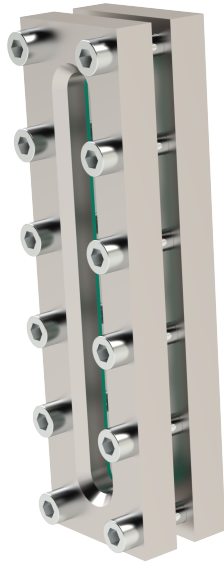


Sight glass fitting rectangular TYPE BS03



description:

Sight flow indicators are used for observation and to illuminate of optical control fluids and gases. E.g. tanks, silos, boilers...

features:

- suitable for neutral and non-neutral **liquids and gaseous media.**
- with borosilicate glass DIN 7080
- Delivery includes: Base- & cover flange, glass & sealing

Connection:

Length: 170, 220, 250, 310, 370, 500, 620, 740, 930

Design:

rectangular

Pressure:

Max. 16 bar

Design:

to be welded directly to tank

Material base-flange:

stainless steel 1.4571

Material cover-flange:

stainless steel 1.4571

Seal:

C4400

Glass:

borosilicate glass DIN 7081

Screws:

A4-70

Temperature:

-10°C to 175°C (higher temperatures on request)

Delivery includes:

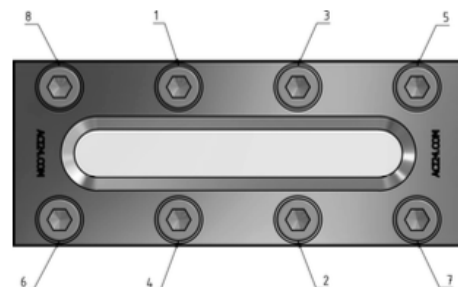
Base- & cover flange, glass & sealings

Torque table for screws (for gasket Klingersil):

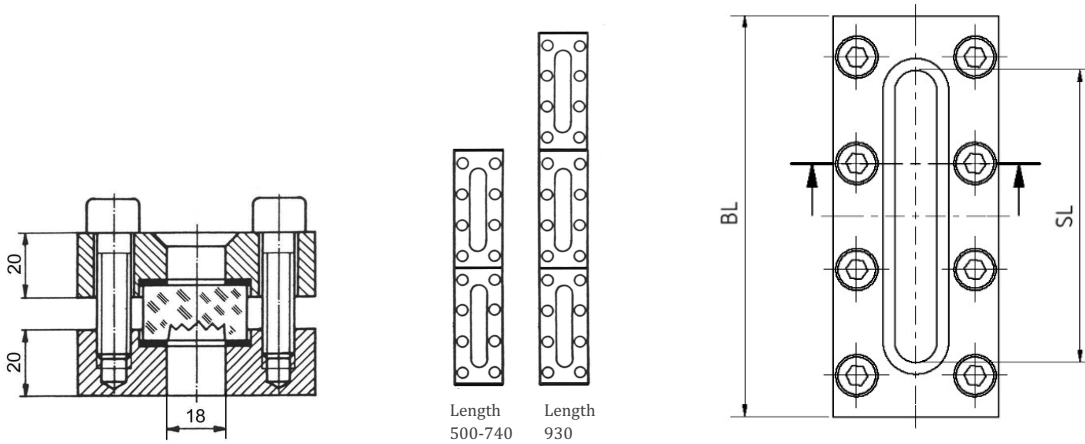
Tighten all screws in several small steps and crosswise. The specified torques are starting values. The torque required for sealing under operation conditions may be higher so that the sight glass gland must be retightened. If sufficient tightness is not achieved with the listed torques they should be increased in steps of approx. 5%. All screws must have exactly the same tightening torque to avoid glass distortion and breakage!

| | | | | | | | | | |
|-----------------------------|-----|-----|-----|-----|-----|-----|-----|-----|-----|
| length | 170 | 220 | 250 | 310 | 370 | 500 | 620 | 740 | 930 |
| minimal torque in Nm | 15 | 16 | 16 | 17 | 18 | 16 | 17 | 18 | 17 |

Sequence for tightening the sight glass fitting:



Dimensions:



| Total length / BL | 170 | 220 | 250 | 310 | 370 | 500 | 620 | 740 | 930 |
|----------------------|-----|-----|-----|-----|-----|-----|-----|-----|-----|
| View length / SL | 124 | 174 | 204 | 264 | 324 | 454 | 574 | 694 | 884 |
| glass length Lx34x17 | 140 | 190 | 220 | 280 | 340 | 220 | 280 | 340 | 280 |
| Screws Stk. | 8 | 10 | 12 | 14 | 16 | 24 | 28 | 32 | 42 |

Options (on request):

- Other length / sizes
- higher temperatures
- gaskets made of PTFE, FKM, NBR, Silicone, EPDM, Graphite
- special materials
- Mica protection (highly recommended for aggressive media or steam!)
- Vacuum design

Article number:

| Type | Glass | Version | Size |
|-------------|--------------------------------|----------------------|---|
| BS03 | 00 – borosilicate glass | 00 – Standard | 01 – 170mm 02 – 220mm 03 – 250mm 04 – 310mm 05 – 370mm 06 – 500mm 07 – 620mm 08 – 740mm 09 – 930mm |

Example no. BS03000006:
BS03 | **00** | **00** | **06**

Article no. BS03000006
 Sight glass fitting rectangular
 Glass: borosilicate glass
 Size: 500mm

Image similar, subject change without notice.