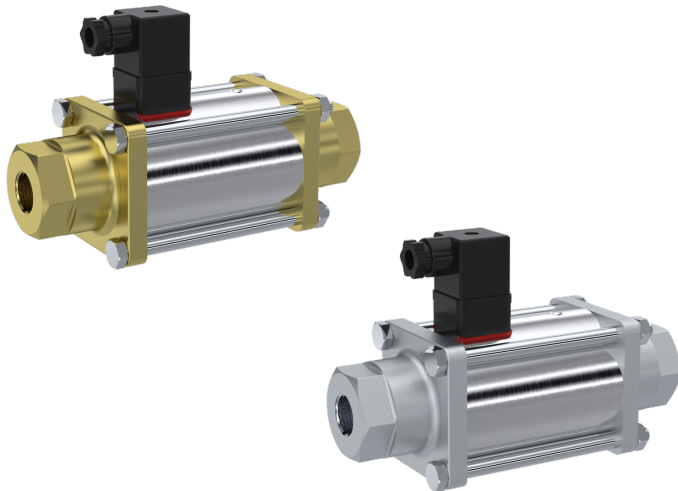


Coaxial-valve type CV01 / CV02



Description:

2/2 way coaxial-valve to control a medium in a pipeline system. These Coaxial-valves is direct acting and can be used starting 0,0 bar.

Features:

- suitable for neutral and not neutral **gaseous & liquid media** (for water - choose option 1)
- maintenance free
- backpressure leakproof up to max. 16 bar
- short switching time
- bi-directional flow direction
- installation possible in any position

Connection:

3/8" DN10, 1/2" DN15, 3/4" DN20, 1" DN25

Temperature:

-10°C to 100°C
depending on design

Pressure:

0,0 bar to 40,0 bar

Design:

Material (media-contacting parts):

Material cylinder tube:

Connection:

Pressure:

Function:

Seal seat/dynamic/static:

connection / electro:

2/2 way, direct acting

Brass | Stainless steel 1.4305

Galvanized steel

Thread

to 40,0 bar

NC - normally closed

NO - normally open

FKM, PTFE / PTFE / FKM

PG 9, plug acc. to DIN EN 175301-803 form A, a.c. operation with rectifier integrate

Specifications:

Technical data

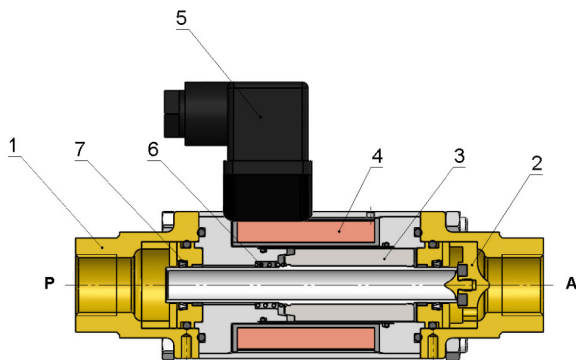
	DN10	DN15	DN20	DN25
Thread connection	G 3/8"	G 1/2"	G 3/4"	G 1"
Pressure range	0-40 bar	0-40 bar	0-40 bar	0-40 bar
Kv-value A -> B	2,5 m3/h	5,2 m3/h	7,0 m3/h	12,3 m3/h
Temperature media*	-10°C to +100°C*	-10°C to +100°C*	-10°C to +100°C*	-10°C to +100°C*
Temperature ambient	-10°C to +50°C	-10°C to +50°C	-10°C to +50°C	-10°C to +50°C
Switching time open/close	50 ms / 80 ms	80 ms / 120 ms	110 ms / 100 ms	150 ms / 300 ms
Vacuum leak rate (Bubble tight)**	approx. 10-3 mbar	approx. 10-3 mbar	approx. 10-3 mbar	approx. 10-3 mbar
Flow direction	P -> A max. 40 bar A -> P max. 16 bar	P -> A max. 40 bar A -> P max. 16 bar	P -> A max. 40 bar A -> P max. 16 bar	P -> A max. 40 bar A -> P max. 16 bar
Nominal voltage / current consumption	24 V DC / 35 W 230 V 50 Hz / 41 W	24 V DC / 40 W 230 V 50 Hz / 45 W	24 V DC / 45 W 230 V 50 Hz / 53 W	24 V DC / 60 W 230 V 50 Hz / 68 W
Insulating material class***	H	H	H	H
Protection	IP 65	IP 65	IP 65	IP 65
Energized duty rating	ED 100%	ED 100%	ED 100%	ED 100%
Weight	1,7 kg	3,6 kg	5,4 kg	7,1 kg

* with water use only up to 80°C

** higher tightness on request

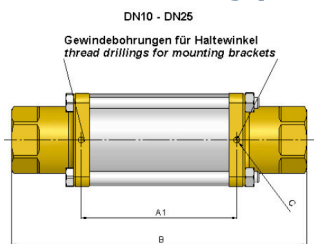
*** referring to potting compound and magnet wire

Sectional drawing:

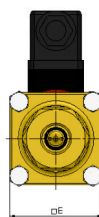
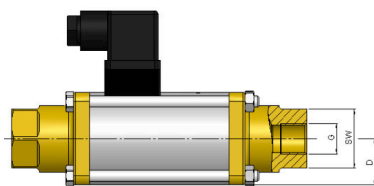
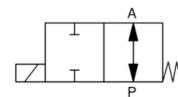
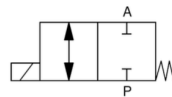


Pos.	Quantity	Description
1	2	Adapter fitting
2	1	Valve seat
3	1	Plunger
4	1	Solenoid
5	1	Plug
6	1	Spring
7	2	PTFE-rod seal

Dimension drawing (in mm):



Schaltfunktion A: NC (stromlos geschlossen) / NC (normally closed) Schaltfunktion B: NO (stromlos offen) / NO (normally open)



DN	G	SW	A1	B	C	D	E
10	3/8"	32	84	159,5	M4	25	50
15	1/2"	41	100	184	M5	35	70
20	3/4"	46	108	215	M5	40	80
25	1"	55	121	246	M5	45	90

Article number:

Type	Voltage	Option	Function	Size
CV01 – brass	00 – 230V AC	0 – Standard	00 – NC normally closed	02 – G 3/8"
CV02 – stainless steel	01 – 24V DC	1 – Water	01 – NO normally open	03 – G 1/2"
				04 – G 3/4"
				05 – G 1"

Example No. CV02010003:

CV02 | 01 | 0 | 0 | 03

Coaxial-valve made of stainless steel
 Voltage: 24V DC
 Function: normally closed
 Size: G 1/2"

OTHER SIZES, CONNECTIONS, VOLTAGES, HIGHER PRESSURES, MANUAL OPERATION, ATEX, etc. available upon request.

Image similar, subject change without notice.