

Siphon TYPE WR



Image similar

Description:

Siphons are useful to protect a pressure meter of pressure surge or heat. Installation and deinstallation just without pressure.

Features:

- Suitable for liquids, gas and steam
- Free of maintenance
- 1/2" connection
- Pressure connection horizontal resp. vertical depending on design
- In circular form, U-shape or U-shape flat available

connection:
G1/2" Inch

temperature:
Up to 400°C – depending on design

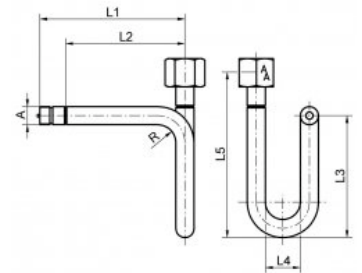
pressure:
Up to 160 bar– depending on design and temperature

Type WR siphon

pressure range:	up to 160 bar depending on operating pressure in front of the siphon max. 160 bar at 120°C max. 120 bar at 300°C max. 100 bar at 400°C
form:	WR01 U-shape WR02 U-shape flat WR03 circular
design:	male thread x sleeve welding end x sleeve welding end x welding end
material:	steel St35.8 (1.0305) or stainless steel 1.4571 in each case seamless pipes
pressure connection:	vertical (circular) or horizontal operating pressure (U-form)
norm:	DIN 16282 form A, form B, form C, form D, form F and form G

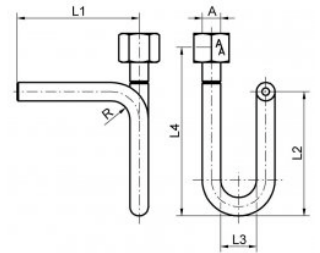
siphon male thread x sleeve for horizontal pressure connection

Type	A	DIN	Form	L1/ mm	L2/ mm	L3/ mm	L4/ mm	L5/ mm	Material	Art.Nr.
WR01	G1/2	16282 Form A	U-Form	180	145	155	56	200	Steel	WR01000003
WR02	G1/2	16282 Form A	U-Form flat	255	220	155	56	200	Steel	WR02000003
WR01	G1/2	16282 Form A	U-Form	180	145	155	56	200	Stainless steel 1.4571	WR01000103
WR02	G1/2	16282 Form A	U-Form flat	255	220	155	56	200	Stainless steel 1.4571	WR02000103



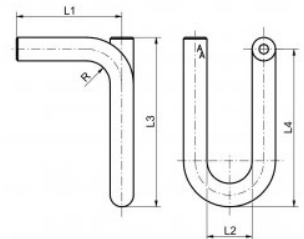
siphon welding end x sleeve for horizontal pressure connection

Type	A	DIN	Form	L1/ mm	L2/ mm	L3/ mm	L4/ mm	Material	Art.Nr.
WR01	G1/2	16282 Form B	U-Form	145	155	56	200	Steel	WR01010003
WR02	G1/2	16282 Form B	U-Form flat	220	155	56	200	Steel	WR02010003
WR01	G1/2	16282 Form B	U-Form	145	155	56	200	Stainless steel 1.4571	WR01010103
WR02	G1/2	16282 Form B	U-Form flat	220	155	56	200	Stainless steel 1.4571	WR02010103



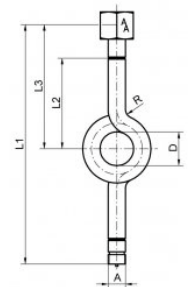
siphon welding end x welding end for horizontal pressure connection

Type	A	DIN	Form	L1/ mm	L2/ mm	L3/ mm	L4/ mm	Material	Art.Nr.
WR01	G1/2	16282 Form F	U-Form	145	56	165	155	Steel	WR01020003
WR01	G1/2	16282 Form F	U-Form	145	56	165	155	Stainless steel 1.4571	WR01020103



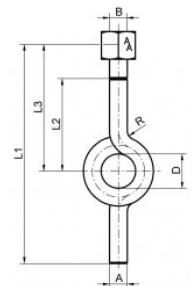
siphon male thread x sleeve for vertical pressure connection

Type	A	DIN	Form	D	L1/ mm	L2/ mm	L3/ mm	Material	Art.Nr.
WR03	G1/2	16282 Form C	Circular	56	275	95	130	Steel	WR03000003
WR03	G1/2	16282 Form C	Circular	56	275	95	130	Stainless steel 1.4571	WR03000103



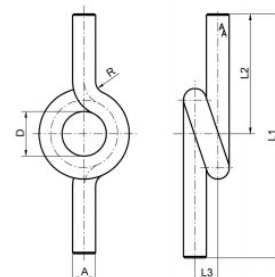
siphon welding end x sleeve for vertical pressure connection

Type	A	DIN	Form	D	L1/ mm	L2/ mm	L3/ mm	Material	Art.Nr.
WR03	G1/2	16282 Form D	Circular	56	240	95	130	Steel	WR03010003
WR03	G1/2	16282 Form D	Circular	56	240	95	130	Stainless steel 1.4571	WR03010103



siphon welding end x welding end for vertical pressure connection

Type	A	DIN	Form	D	L1/ mm	L2/ mm	L3/ mm	Material	Art.Nr.
WR03	G1/2	16282 Form G	Circular	56	240	95	25	Steel	WR03020003
WR03	G1/2	16282 Form G	Circular	56	240	95	25	Stainless steel 1.4571	WR03020103



Suitable equipment for siphons:



Manometer-gauge-valves you will find at:

www.nieruf.de/en/Manometer-gauge-valve



Pressure gauges you will find at:

www.nieruf.de/en/Pressure-gauge



Image similar, subject change without notice.